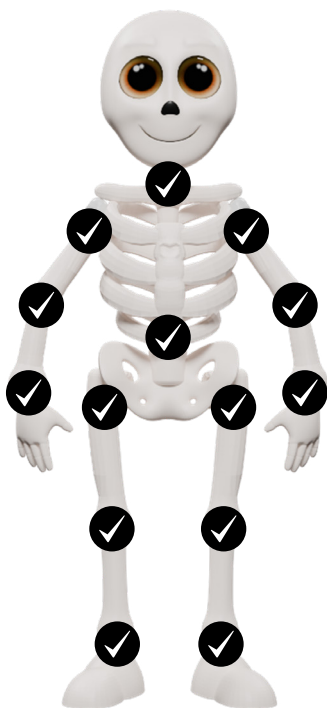
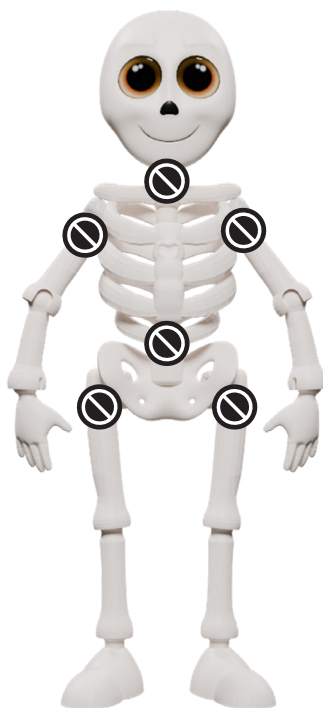


# IMPORTANT SAFETY INFORMATION



 **MOVABLE JOINTS**



 **DO NOT REMOVE**

**Bones** is here to **bring smiles**, not stress - so thank you for keeping the fun safe by **treating him with care!** Sure, he's a skeleton, but you can see his heart - a reminder he's sensitive and needs **gentle handling**.



**MOVABLE JOINTS**



**SNAP-FIT DESIGN**



**DETACHABLE JOINTS**



**DELICATE JOINTS**



**HANDLE WITH CARE**



**AVOID EXCESSIVE FORCE**



**GENTLE MOVEMENT**



**RESPECT RANGE OF MOTION**



**NO ROUGH PLAY**



**ADULT SUPERVISION**



**INDOOR USE ONLY**



**CHOKING HAZARD**

**SEE OTHER SIDE FOR MORE SAFETY INFORMATION**



# READ BEFORE USE & PLAY WITH BONES

## IMPORTANT: HANDLE BONES WITH CARE

The Bones figure is designed with movable joints for easy posing and gentle play. The joints are engineered as snap-fit systems to avoid using screws and make the figure safer for children. Joints may detach. They can be safely reattached. In particular, the neck, shoulders, pelvis, and hips are delicate, move-only joints (not intended to be removed). Handle with care, and do not attempt to detach or reattach joints that are not intended for that. Pressing, squeezing, or excessive force may cause damage, cracks, or breakage of the Bones figure.

## TO AVOID DAMAGE OR INJURY



### MOVABLE JOINTS:

Bones has movable joints designed for easy posing and gentle play



### SNAP-FIT DESIGN:

Joints use a snap-fit system (no screws), making the figure safer for children



### DETACHABLE JOINTS:

Joints may detach. They can be safely reattached



### DELICATE JOINTS:

The neck, shoulders, pelvis, and hips are move-only joints. Do not detach or reattach them



### HANDLE WITH CARE:

Do not attempt to detach or reattach joints that are not intended for that



### AVOID EXCESSIVE FORCE:

Pressing, squeezing, or excessive force may cause damage, cracks, or breakage of the Bones figure



### GENTLE MOVEMENT:

Move joints slowly and carefully



### RESPECT RANGE OF MOTION:

Never twist, push, pull, or bend joints beyond their natural limits



### NO ROUGH PLAY:

Do not throw, drop, or sit on Bones. Avoid any play that places extra pressure on the figure



### ADULT SUPERVISION:

Young children must always be supervised during play



### INDOOR USE ONLY:

Bones is intended for indoor play and display only



### CHOKING HAZARD:

WARNING: Small parts. Not for children under 4 years

**This product complies with U.S. toy safety standards ASTM F963 and CPSIA.**

### DISCLAIMER

*Bones is a collectible figure intended for display and gentle play only. Damage, breakage, or injury from misuse, rough handling, or excessive force or pressure is not eligible for replacement or refund. Except as required by law, no express or implied warranties apply. For eligible claims, remedies are limited to a replacement or refund, at the discretion of Bones & Friends, LLC.*

*Bones & Friends, LLC expressly disclaims all liability for any injuries, damages, or product failure resulting from improper use, failure to follow these guidelines, or use in a manner inconsistent with intended purpose. Use at your own risk. These terms are governed by the laws of the State of Florida, USA, and any disputes shall be resolved exclusively in the state or federal courts located in Orange County, Florida.*